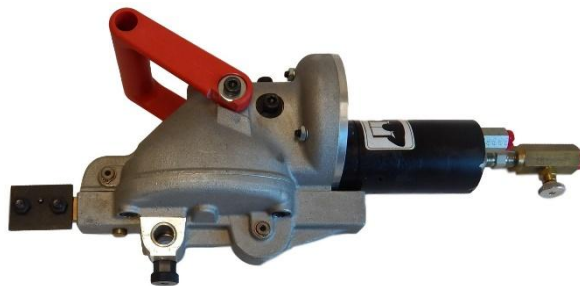


WIDDER TOOLS



Industrial Manufacturing Solutions

18800 Hydraulic Hacksaw



PRODUCT INFORMATION AND OPERATING INSTRUCTIONS

Description: The **18800** Hydraulic Hacksaw is a heavy-duty, hydraulic hacksaw for demolition, pipe cutting and other industrial applications.

Cutting Capacity: Up to 30" (6-1/2" under blade length)

Specifications: 1.5HP @ 5 GPM @ 1700 PSI
2-3/8" Stroke – Variable Speed (0-400 Strokes/Minute)

Weight: 21 lbs.

**IMPORTANT: READ MANUAL CAREFULLY BEFORE OPERATING THIS TOOL.
FOLLOW ALL SAFETY PRECAUTIONS LISTED AND ALL OSHA REGULATIONS
PERTAINING TO THIS TOOL.**

SAFETY PRECAUTIONS:

Warning: When using air tools, basic safety precautions should always be followed to reduce the risk of injury, including the following:

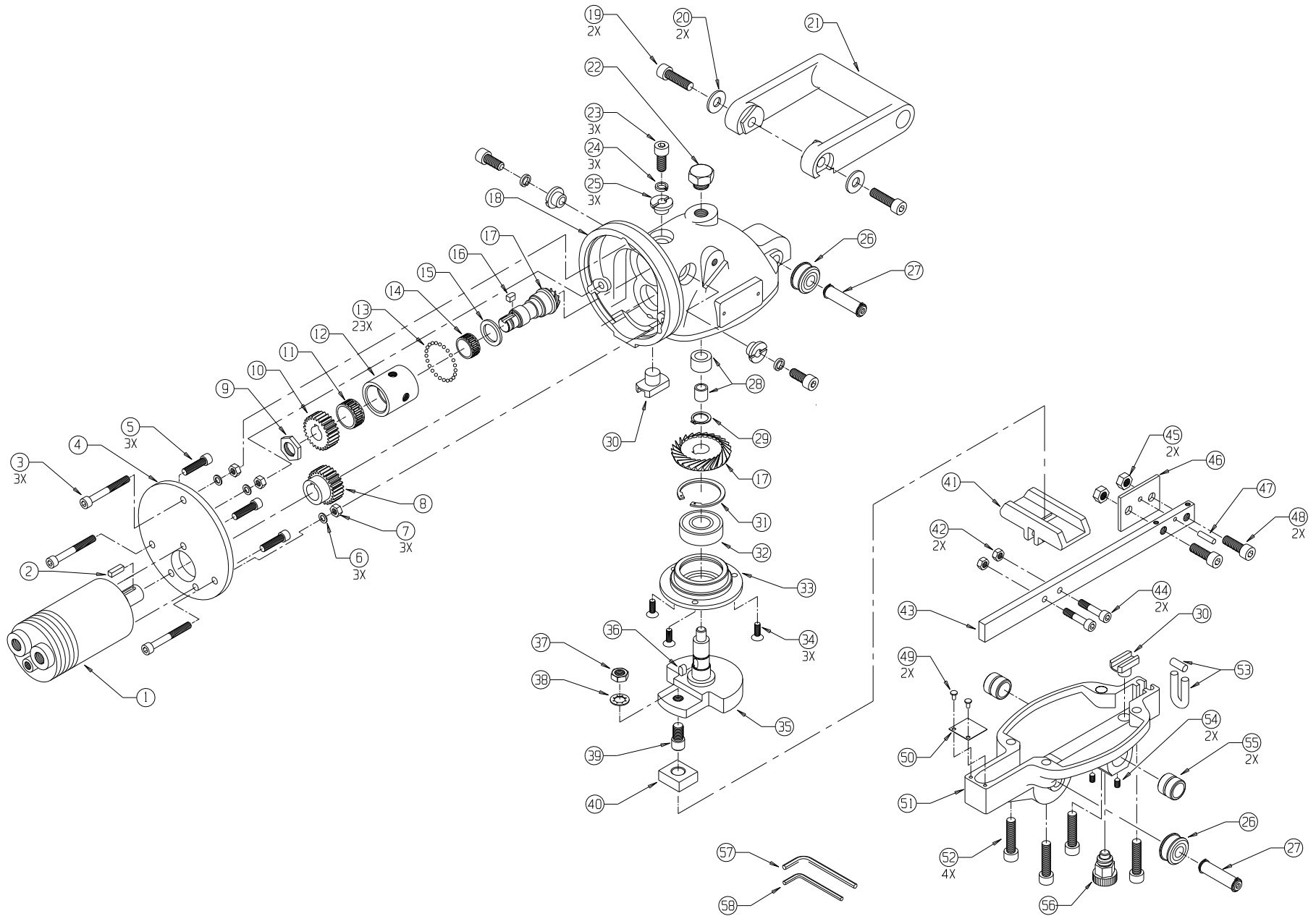
1. **Avoid accidental starting.**
 - Keep needle valve shutoff closed when transporting or repositioning
2. **Disconnect Machine.**
 - This tool should be disconnected when not in use. If hydraulic power is shutoff, tool should be discharged of any stored fluid pressure.
3. **Maximum Hydraulic Pressure**
 - Maximum hydraulic pressure is 2000 PSI.
 - Use 100 SUS Fluid w/ a 10 Micron filter at power source.
4. **Protect fluid lines**
 - Avoid using excessive length lines. Extended lines reduce tool power and are a working hazard.
 - Inspect all hydraulic lines for safe condition before use.
5. **Maintain Tool.**
 - Use sharp blades and keep Saw clean for optimum performance.
 - Keep handles clean, dry and free from oil and grease.
6. **Do not force tool.**
 - Use tool mounted in **WIDDER** clamp with clamp tightly secured to work piece.
 - Cut should be performed with adequate force to develop chips during cutting but not so as to stall the tool under load.
7. **Support work piece**
 - Be sure to support the work piece on both sides of any cut. An unsupported work piece can sag, pinching the blade and causing the blade to break or shatter.
8. **Dress properly.**
 - Do not wear loose clothing or jewelry as they can be caught in moving parts.
 - Work gloves and non-skid footwear are recommended.
 - Wear ear protection.
 - Wear safety glasses.
9. **Maintenance.**
 - Maintenance should be performed by a **WIDDER** Factory Authorized Service Representative.
10. **Replacement Parts.**
 - When servicing use only genuine **WIDDER** replacement parts from an authorized distributor.

OPERATING INSTRUCTIONS:

Warning: Operator should be thoroughly familiar with safety precautions before attempting to operate this tool.

1. Install saw blade firmly with Lock plate and pin engaged with blade.
2. Be sure saw is firmly mounted on **WIDDER** Pipe Clamp. Close needle valve.
3. Start power source.
4. Adjust needle valve to desired speed.
5. Manually feed blade into cut, applying enough pressure to produce chips shaped like small 6 or 9 shaped pieces. Adjust saw speed to compensate for load if required.
6. If possible, apply lubricant, water, or air blast to cut. This will extend blade life, speed cutting time, and keep the blade and work piece cool.
7. **CAUTION:** No steel cutting blade can cut without the chance of heat or sparks. Do not use tool in explosive environments without following all industry accepted practices for safe power tool and metal working operation.

WIDDER Hydraulic Hacksaw #18800



WIDDER Hydraulic Hacksaw #18800

Item	Part #	Description	Included In Kit
1	18339	Hydraulic Motor	-
2	18818	Key	-
3	18051	Cap Screw	-
4	18340	Flange	-
5	18124	Cap Screw	-
6	18052	Washer	-
7	18057	Nut	-
8	18817	Gear	-
9	18017	Nut	B G
10	18815	Gear	B G
11	18009	Needle Bearing	B G
12	18013	Ball Shell	B G
13	18012	Ball Set	B G
14	18014	Needle Bearing	B G
15	18011	Ball Race	B G
16	18015	Key	B G
17	18008	Bevel Pinion/Gear Set	B F G
18	18001	Gear Housing	B
19	18164	Cap Screw	-

Item	Part #	Description	Included In Kit
20	18160	Washer	-
21	18053	Handle	-
22	18002	Oil Screw	B
23	18019	Cap Screw	B
24	18020	Lock Washer	B
25	18018	Eccentric Bushing	B
26	17888	Roller Assy.	A B
27	18041	Pin & Ret. Set	A B
28	18028	Race & Needle Bearing	B F
29	18027	Retaining Ring	B F
30	18039	Guide Piece	A B
31	18024	Retaining Ring	B F
32	18022	Ball Bearing	B F
33	18023	Bearing Plate	B F
34	18029	Screw	B
35	18025	Key	B F
36	18021	Crankshaft	B E F H
37	18032	Hex Nut	B E F H
38	18031	Spring Washer	B E F H

Item	Part #	Description	Included In Kit
39	18030	Crankpin	B E F H
40	18033	Slide Block	-
41	18143-2	Channel	D
42	18057	Nut	D
43	18143-1	Connecting Rod	D
44	18724	Cap Screw	D
45	18035	Nut	I
46	18036	Thrust Plate	I
47	18148	Pin	I
48	18328	Bolt	I
49	18049	Rivet	A
50	18050	Cover Plate	A
51	18323	Cover	A C E
52	18055	Cap Screw	-
53	18045	Felt Gasket	A
54	17887	Set Screw	A C E
55	18092	Bushing	A C E
56	18048	Mount/Lock Assy.	A
57	18090	5mm Hex Key Wrench	-
58	18091	6mm Hex Key Wrench	-

Spare Parts Kits

Kit Letter	Part #	Description	Includes Item #s
A	17886	Cover Assembly	26, 27, 30, 49, 50, 53, 56 & Kit C
B	18338	Hydraulic Gear Head Assembly	18, 22, 23, 24, 25, 26, 27, 30, 34 & Kit F, G
C	18037	Gear Housing Cover Assembly	51, 54, 55
D	18143	Connecting Rod & Channel Assy.	41, 42, 43, 44
E	18145	Connecting Rod Assy. With Lock	Kit C, H

Kit Letter	Part #	Description	Includes Item #s
F	18324	Crankshaft Assy.	17 (Less Bevel Pinion), 28, 29, 31, 32, 33, 35 & Kit H
G	18337	Hydraulic Ball Shell Assembly	9, 10, 11, 12, 13, 14, 15, 16, 17 (Pinion Gear Only)
H	18326	Crank & Pin Assembly	36, 37, 38, 39
I	18150-1	Blade Locking Device	45, 46, 47, 48