


WIDDER HPIC-D
HYDROSTATIC TEST SYSTEM
WITH ADDITEL LOGGING
GAUGE

A decorative graphic consisting of several parallel white lines of varying thicknesses, extending diagonally from the bottom left towards the top right of the page.

- ▶ Step 1: Connect Gauge to USB
- ▶ Step 2: Connect USB to Computer
- ▶ Step 3: Open Additel Land Software on Computer
- ▶ Step 4: Scan for gauge
- ▶ Step 5: Select Gauge
- ▶ Step 6: Select Data Logging
- ▶ Step 7: Click to upload logged Data
- ▶ Step 8: Click to upload logged Data
- ▶ Step 9: Modify Spreadsheet in Excel to match Vessels tested
- ▶ Step 10: Save Spread Sheet into Proper File for Future Reference

TABLE OF CONTENTS



Widder® Hydrostatic Test Systems



TEST PRESSURE

TEST PRESSURE

ISOLATION VALVE



AIR PRESSURE

AIR PRESSURE REGULATOR

HIGH PRESSURE BLEED VALVE

WATER IN

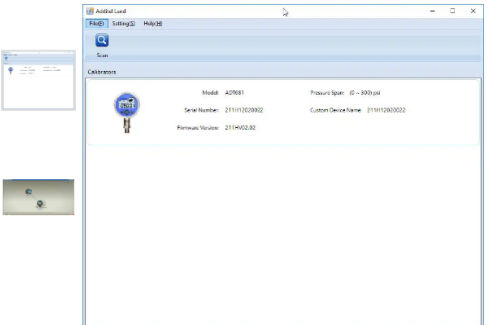
HIGH PRESSURE OUT

additel.com/product-detail.html/land-pressure-software/

Call: 714-998-6899 Email: sales@additel.com

HOME PRODUCTS SERVICES ABOUT WHERE TO BUY

Search



Additel Land

Data Downloading Software

- Simple user interface
- Support various units
- Download data from your Additel products
- Works with Wired and Wireless Devices
- Free

Request a Quote

Request a Calibration

Ask a Question

OVERVIEW RESOURCES VIDEOS

Software and Firmware			
Name	Version	Upload Date	Size
Additel/Land	4.0.7	2022-12-07	211 MB
Additel/Land Live Update	4.0.7	2022-12-07	149 MB

DOWNLOAD LAND SOFTWARE FROM
 ADDITEL: [HTTPS://WWW.ADDITEL.COM/PRODUCT-
 DETAIL.HTML/LAND-PRESSURE-SOFTWARE/](https://www.additel.com/product-detail.html/land-pressure-software/)



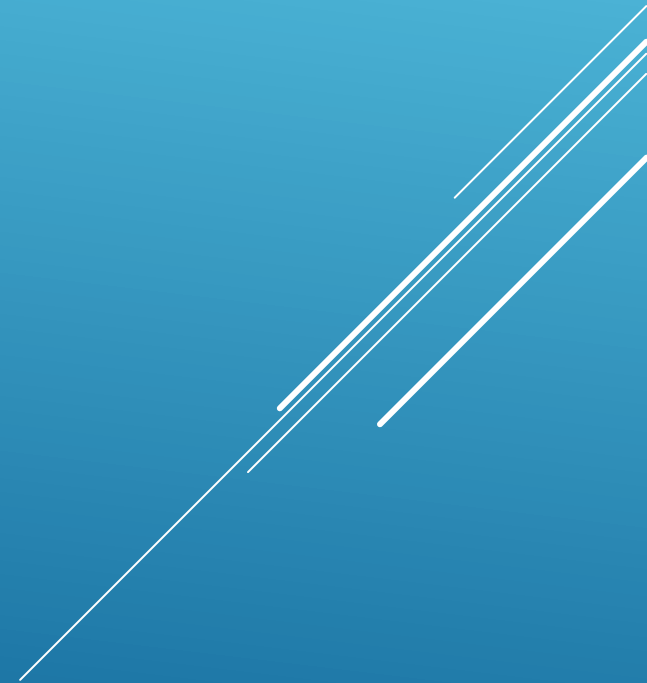
STEP 1: CONNECT GAUGE TO USB
CORD

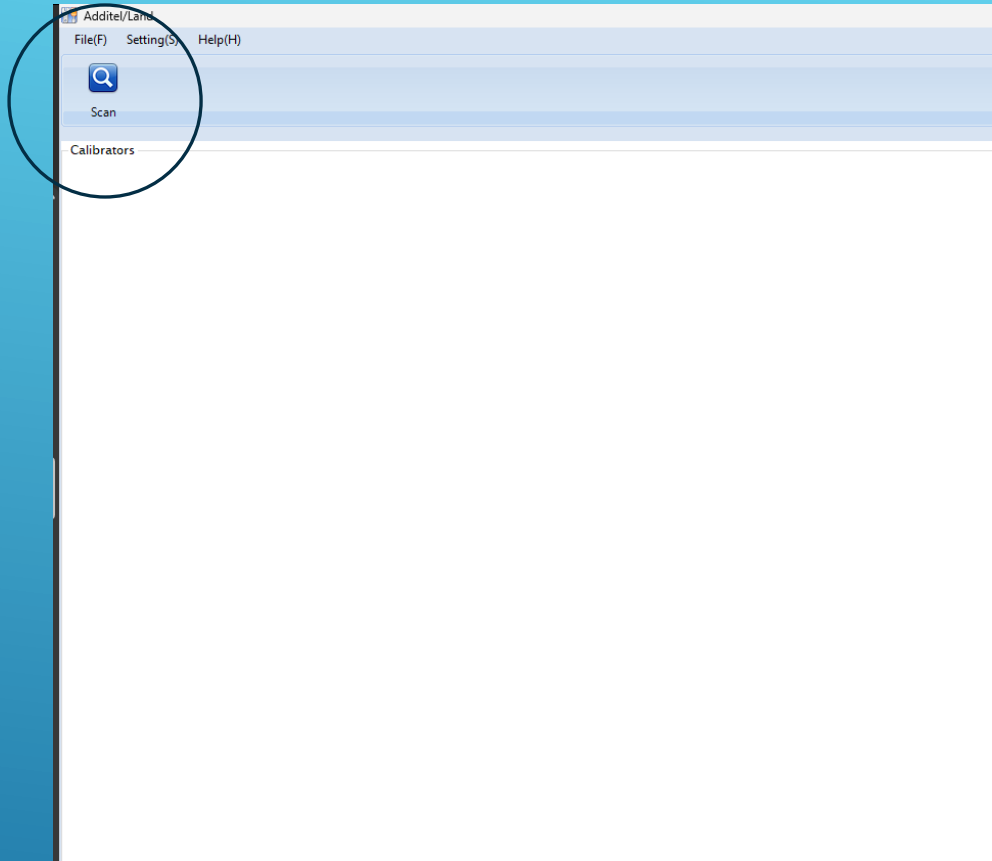


STEP 2: CONNECT USB TO COMPUTER

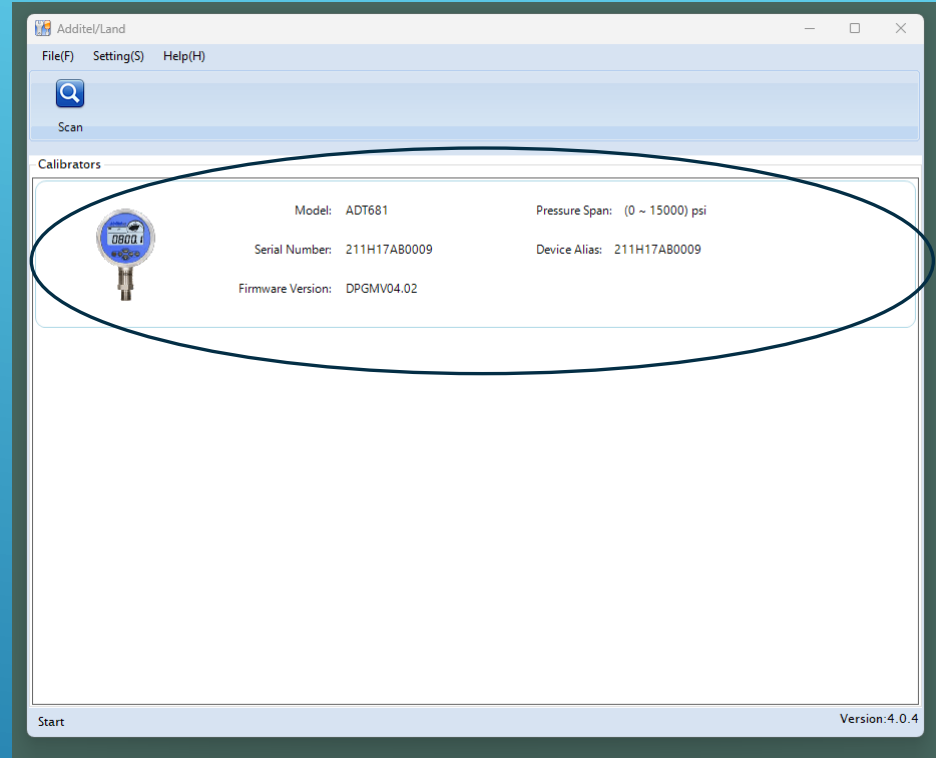


STEP 3: OPEN TO ADDITEL LAND ON
COMPUTER

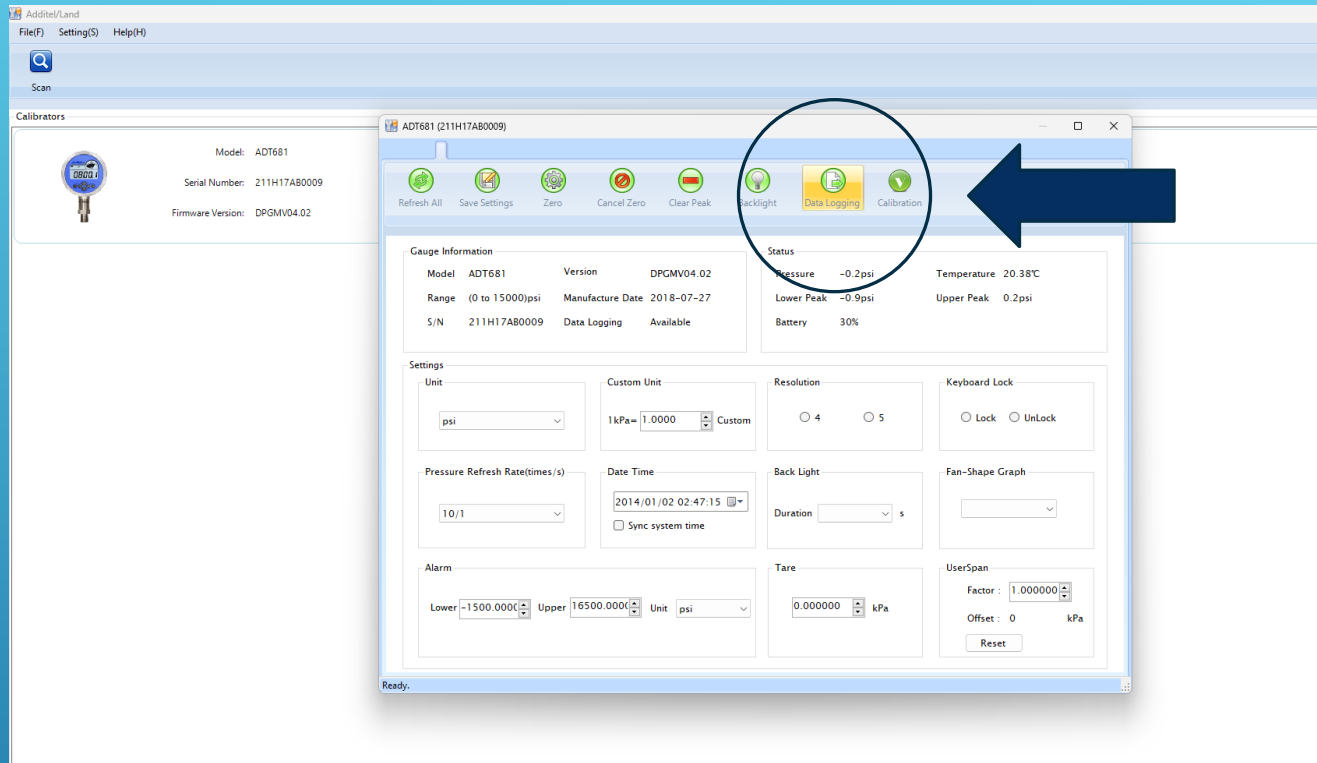




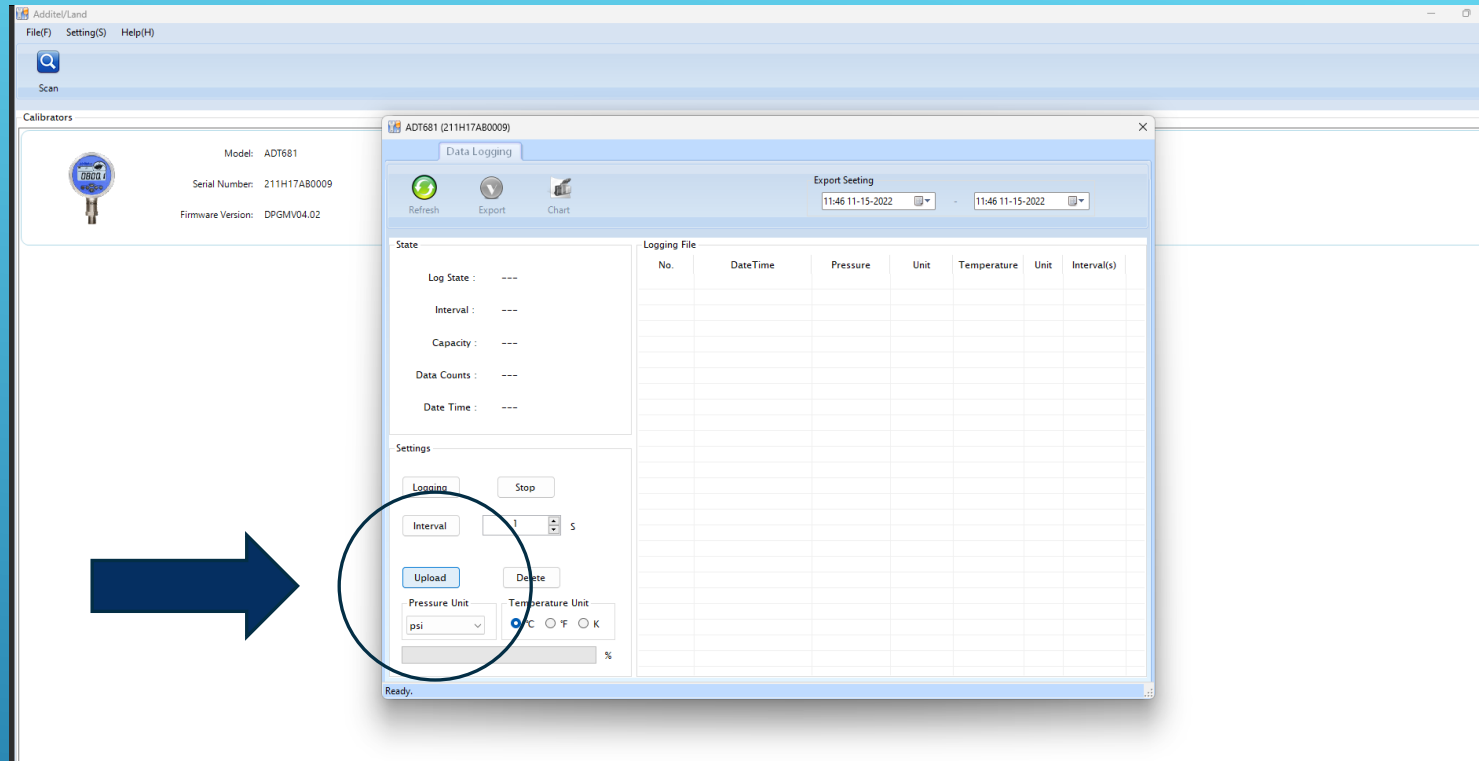
STEP 4: SCAN FOR GAUGE



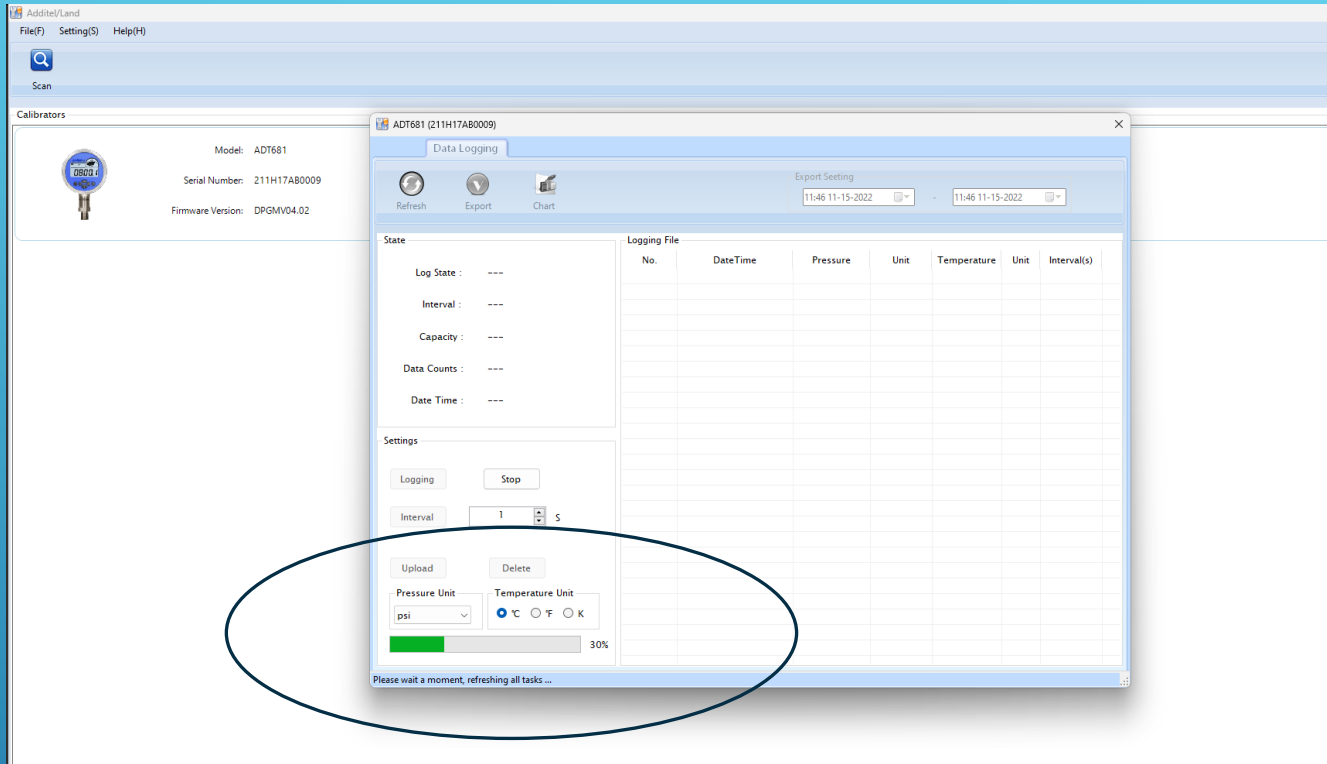
STEP 5: SELECT GAUGE



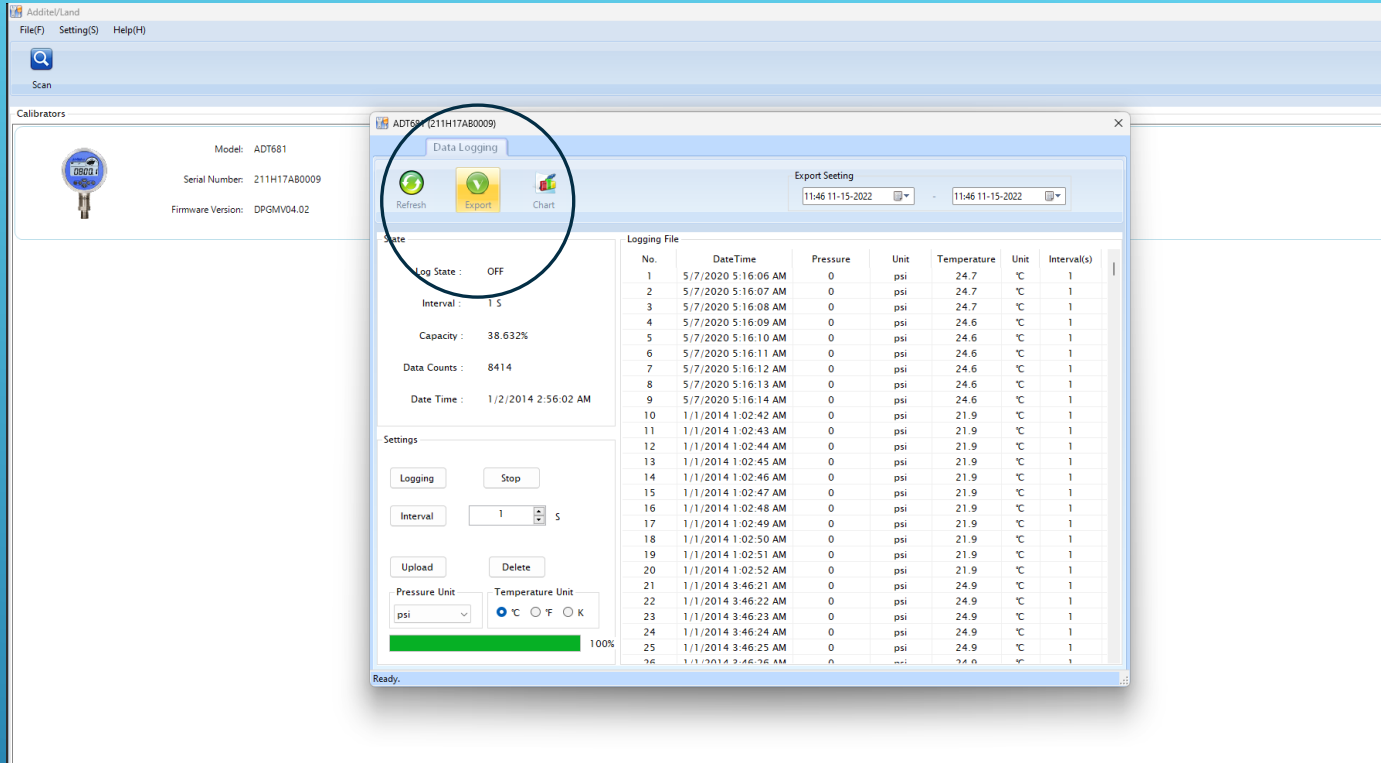
STEP 6: SELECT DATA LOGGING



STEP 7: CLICK TO UPLOAD LOGGED DATA



STEP 7 CONT'D: CAN TAKE 2-5
MINUTES



STEP 8: EXPORT DATA INTO EXCEL



Logging Report

Calibrator Information

Model: ADT681

Serial Number: 211H17AB0009

Span: (0 ~ 15000) psi

Version: DPGMV04.02

Manufacture Date: 2018-07-27

Data Logging: Available

Calibration Results

NO.	DateTime	Pressure	Unit	Temperature(°C)	Interval(s)
1	12/7/2022 9:22	200	psi	24.7	1
2	12/7/2022 9:25	4700	psi	24.7	1
3	12/7/2022 9:40	4700	psi	24.7	1
4	12/7/2022 10:11	200	psi	24.6	1
5	12/7/2022 10:16	7000	psi	24.6	1
6	12/7/2022 10:36	7000	psi	24.6	1



Logging Report

Calibrator Information

Model: ADT681

Serial Number: 211H17AB0009

Span: (0 ~ 15000) psi

Version: DPGMV04.02

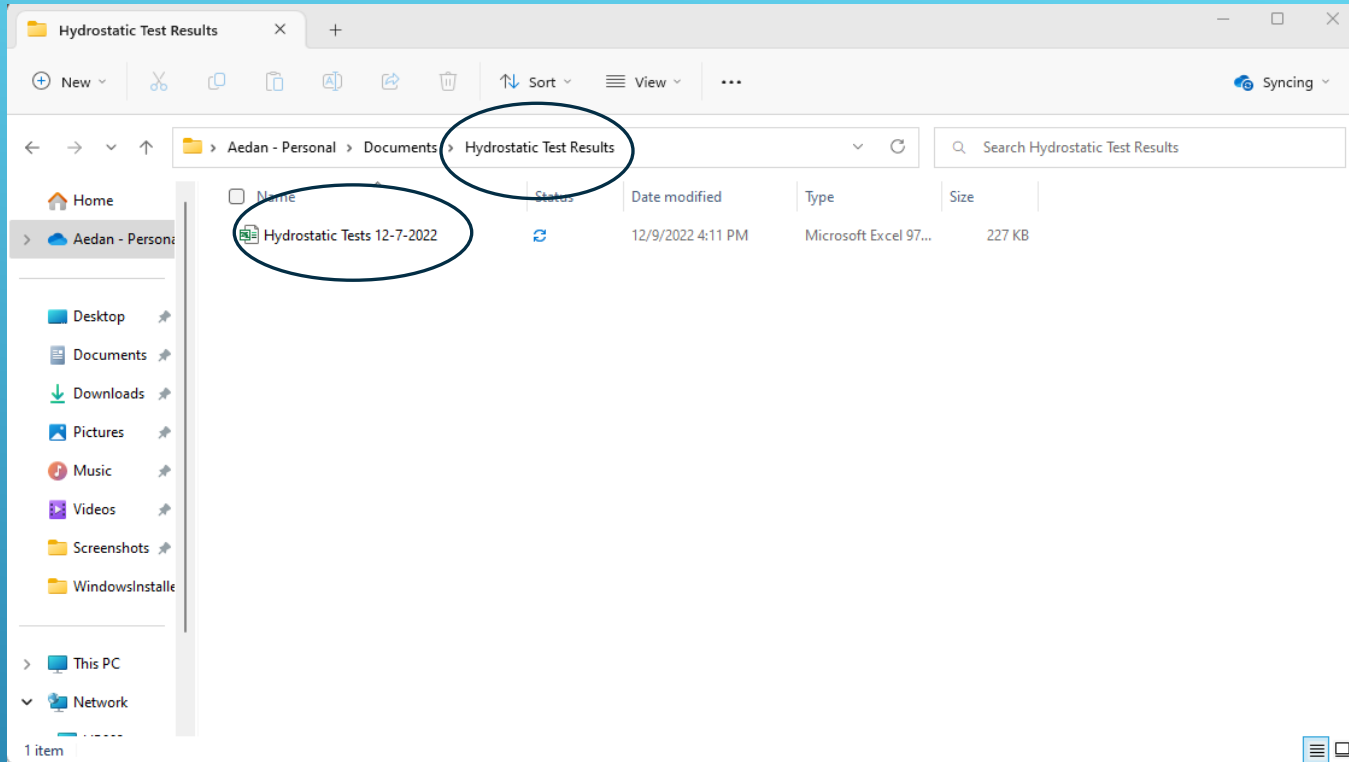
Manufacture Date: 2018-07-27

Data Logging: Available

Calibration Results

NO.	DateTime	Pressure	Unit	Temperature(°C)	Interval(s)
HP-001	12/7/2022 9:22	200	psi	24.7	1
HP-001	12/7/2022 9:25	4700	psi	24.7	1
HP-001	12/7/2022 9:40	4700	psi	24.7	1
HP-002	12/7/2022 10:11	200	psi	24.6	1
HP-002	12/7/2022 10:16	7000	psi	24.6	1
HP-002	12/7/2022 10:36	7000	psi	24.6	1

STEP 9: MODIFY SPREADSHEET IN EXCEL TO MATCH VESSELS TESTED



STEP 10: SAVE SPREAD SHEET INTO
PROPER FILE FOR LATER REFERENCE

