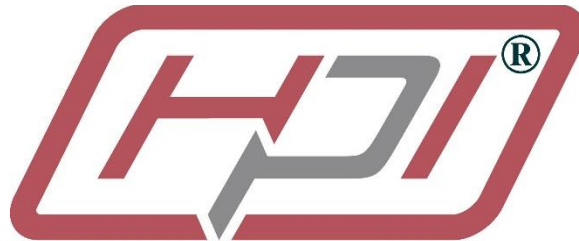
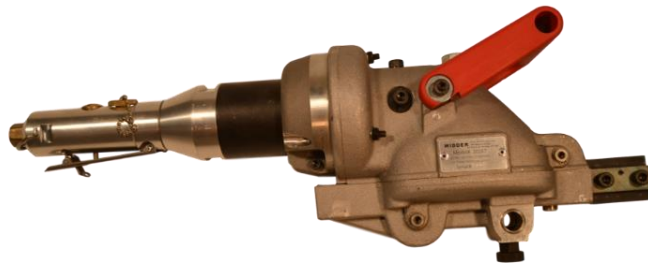


WIDDER TOOLS



Industrial Manufacturing Solutions

10267 Pneumatic Hacksaw



PRODUCT INFORMATION AND OPERATING INSTRUCTIONS

Description: The **10267** Pneumatic Hacksaw is a heavy-duty pneumatic hacksaw for demolition, pipe cutting and other industrial applications.

Cutting Capacity: Up to 30" (6-1/2" under blade length)

Specifications: 1.5HP @ 45 CFM at optimal 105-110 PSI
2-3/8" Stroke – Variable Speed (0-300 Strokes/Minute)

Weight: 21 lbs.

**IMPORTANT: READ MANUAL CAREFULLY BEFORE OPERATING THIS TOOL.
FOLLOW ALL SAFETY PRECAUTIONS LISTED AND ALL OSHA REGULATIONS
PERTAINING TO THIS TOOL.**

SAFETY PRECAUTIONS:

Warning: When using air tools, basic safety precautions should always be followed to reduce the risk of injury, including the following:

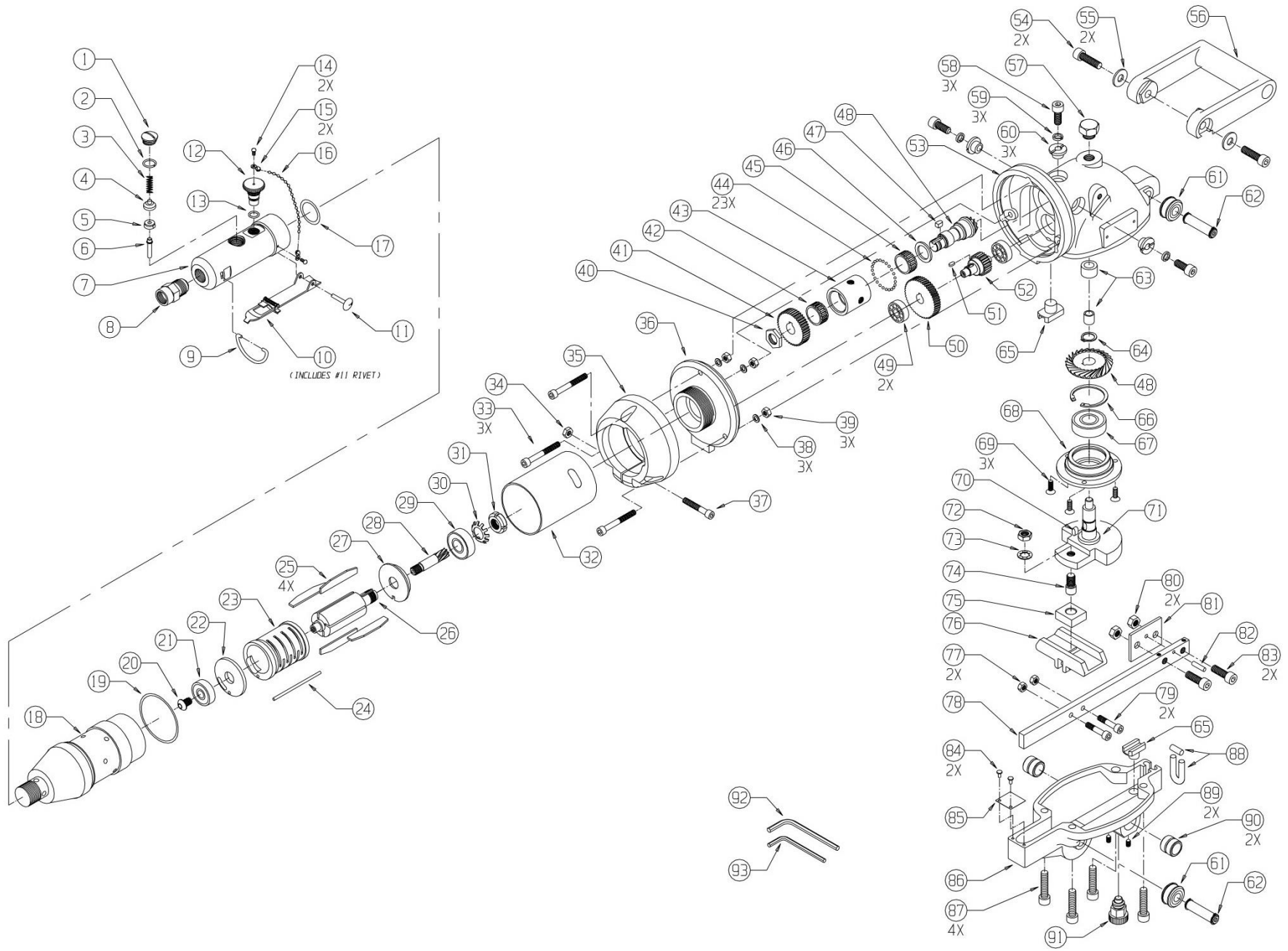
1. **Avoid Accidental Starting.**
 - Keep throttle shutoff closed when transporting or repositioning
2. **Disconnect Machine.**
 - This tool should be disconnected when not in use. If air is shutoff, tool should be discharged of any stored air pressure.
3. **Maximum Air Pressure**
 - Maximum air pressure is 135 PSI.
 - Use clean, lubricated, regulated air.
4. **Protect Airlines**
 - Avoid using excessive length airlines. Extended airlines reduce tool power and are a working hazard.
 - Inspect all airlines for safe condition before use.
5. **Maintain Tool.**
 - Use sharp blades and keep Saw clean for optimum performance.
 - Keep handles clean, dry and free from oil and grease.
 - This tool, like all air tools, will provide best performance with lubrication.
 - Use **WIDDER** Air Tool Lube for best performance
6. **Do Not Force Tool.**
 - Use tool mounted in **WIDDER** clamp with clamp tightly secured to work piece.
 - Cut should be performed with adequate force to develop chips during cutting but not so as to stall the tool under load.
7. **Support Work Piece**
 - Be sure to support the work piece on both sides of any cut. An unsupported work piece can sag, pinching the blade and causing the blade to break or shatter.
8. **Dress Properly.**
 - Do not wear loose clothing or jewelry as they can be caught in moving parts.
 - Work gloves and non-skid footwear are recommended.
 - Wear ear protection.
 - Wear safety glasses.
9. **Maintenance.**
 - Maintenance should be performed by a **WIDDER** Factory Authorized Service Representative.
10. **Replacement Parts.**
 - When servicing use only genuine **WIDDER** replacement parts from an authorized distributor.

OPERATING INSTRUCTIONS:

Warning: Operator should be thoroughly familiar with safety precautions before attempting to operate this tool.

1. Install saw blade firmly with Lock plate and pin engaged with blade.
2. Be sure saw is firmly mounted on **WIDDER** Pipe Clamp
3. Start saw and adjust throttle speed to material speed specifications.
4. Manually feed blade into cut, applying enough pressure to produce chips shaped like small 6 or 9 shaped pieces. Adjust saw speed to compensate for load if required.
5. If possible, apply lubricant, water, or air blast to cut. This will extend blade life, speed cutting time, and keep the blade and work piece cool.
6. **CAUTION:** No steel cutting blade can cut without the chance of heat or sparks. Do not use tool in explosive environments without following all industry accepted practices for safe power tool and metal working operation.
7. Lubricate after use. Apply small amount of air tool or water displacing light spindle oil into throttle intake, reconnect tool and run for 10 seconds before disconnecting for storage,

WIDDER Pneumatic Saw #10267



WIDDER Pneumatic Saw #10267

Item	Part #	Description	Included in Kit
1	18308	Valve Cover	B E K
2	18309	O-ring	B E I K
3	18310	Spring	B E I
4	18311	Seal Cup	B E I
5	18312	Valve Seal	B E I
6	18313	Valve Pin	B E I
7	18314	Throttle Body	B E L
8	18087	Nut & Screen Assy	B E
9	18306	O-ring	B E L
10	18336	Trigger Assy.	B E L M
11	18316	Rivet	B E L M
12	18317	Throttle Screw	B E J
13	18318	O-ring	B E I J
14	18319	Drive Stud	B E J L N
15	18320	End Coupling	B E J L N
16	18321	Bead Chain	B E N
17	18077	O-ring	-
18	18074	Air Motor Body & Insert	E
19	18078	O-ring	-
20	18072	Screw	E F
21	18071	Ball Bearing	E F
22	18069	Rear Plate	E F
23	18067	Cylinder	E F

Item	Part #	Description	Included in Kit
24	18068	Cylinder Pin	E
25	18065	Vane Set	E F
26	18066	Rotor	E F
27	18064	Front End Plate	E F
28	19005	Pinion	E F
29	18063	Ball Bearing	E F
30	18062	Lock Washer	E F
31	18061	Lock Nut	E F
32	17990	Air Motor Cover	E R
33	18051	Cap Screw	E R
34	18162	Nut	E R
35	18059	Collar	E R
36	18058	Flange	E R
37	18163	Cap Screw	E R
38	18052	Washer	E R
39	18057	Nut	E R
40	18017	Nut	C P
41	18016	Gear	C P
42	18009	Needle Bearing	C P
43	18013	Ball Shell	C P
44	18012	Ball Set	C P
45	18014	Needle Bearing	C P
46	18011	Ball Race	C P
47	18015	Key	C P

Item	Part #	Description	Included in Kit
48	18008	Bevel Pinion/Gear Set	C O P
49	18003	Ball Bearing	C E R
50	18005	Helical Gear	-
51	18006	Key	-
52	18004	Pinion	-
53	18001	Gear Housing	C
54	18164	Cap Screw	-
55	18160	Washer	-
56	18053	Handle	-
57	18002	Oil Screw	C
58	18019	Cap Screw	C
59	18020	Lock Washer	C
60	18018	Eccentric Bushing	C
61	17888	Roller Assy.	A C
62	18041	Pin & Ret. Set	A C
63	18028	Race & Needle Bearing	C O
64	18027	Retaining Ring	C O
65	18039	Guide Piece	A C
66	18024	Retaining Ring	C O
67	18022	Ball Bearing	C O
68	18023	Bearing Plate	C O
69	18029	Screw	C
70	18025	Key	C O
71	18021	Crankshaft	C O Q

Item	Part #	Description	Included in Kit
72	18032	Hex Nut	C O Q
73	18031	Spring Washer	C O Q
74	18030	Crankpin	C O Q
75	18033	Slide Block	-
76	18143-2	Channel	G H
77	18057	Nut	G H
78	18143-1	Connecting Rod	G H
79	18724	Cap Screw	G H
80	18035	Nut	H S
81	18036	Thrust Plate	H S
82	18148	Pin	H S
83	18328	Bolt	H S
84	18049	Rivet	A
85	18050	Cover Plate	A
86	18323	Cover	A D
87	18055	Cap Screw	-
88	18045	Felt Gasket	A
89	17887	Set Screw	A D
90	18092	Bushing	A D
91	18048	Mount/Lock Assy.	A
92	18090	5mm Hex Key Wrench	-
93	18091	6mm Hex Key Wrench	-

Spare Parts Kits

Kit Letter	Part #	Description	Includes Item #s
A	17886	Cover Assembly	61, 62, 65, 84, 85, 88, 91 & Kit D
B	17999	Throttle Assy.- Lockout Type	1, 2, 3, 4, 5, 6, 7, 8, 9, 10, 11, 12, 13, 14, 15, 16
C	18000	Gear Head Assembly	49, 53, 57, 58, 59, 60, 61, 62, 65, 69 & Kits O, P
D	18037	Gear Housing Cover Assembly	86, 89, 90
E	18042	Air Motor Assembly	18, 24 & Kits B, F, R
F	18042-1	Rotor Assembly	20, 21, 22, 23, 24, 25, 26, 27, 28, 29, 30, 31
G	18143	Connecting Rod & Channel Assy.	76, 77, 78, 79

Kit Letter	Part #	Description	Includes Item #s
H	18145	Connecting Rod Assy. With Lock	Kits G, S
I	18301	Valve & Seal Kit	2, 3, 4, 5, 6, 13
J	18302	Throttle Screw & Seal Assy.	12, 13, 14, 15
K	18303	Cap & Seal	1, 2
L	18304	Throttle Body Sub-Assembly	7, 9, 10, 11, 14, 15
M	18305	Handle Kit	10, 11
N	18307	Bead Chain Kit	14, 15, 16

Kit Letter	Part #	Description	Includes Item #s
O	18324	Crankshaft Assembly	48 (Less Bevel Pinion) 63, 64, 66, 67, 68, 70 & Kit Q
P	18325	Ball Shell Assembly	40, 41, 42, 43, 44, 45, 46, 47, 48 (Less Bevel Gear)
Q	18326	Crank & Pin Assembly	71, 72, 73, 74
R	18327	Cover & Flange Assembly	32, 33, 34, 35, 36, 37, 38 39, 49
S	18150-1	Blade Locking Device	80,81, 82, 83